

coreflux
jen cutbill

influx masterplan : hastings corridor individual design

flux *n.* : continuous change, passage, or movement; the rate of flow of fluid, particles or energy
v.t. : to fuse by the use of

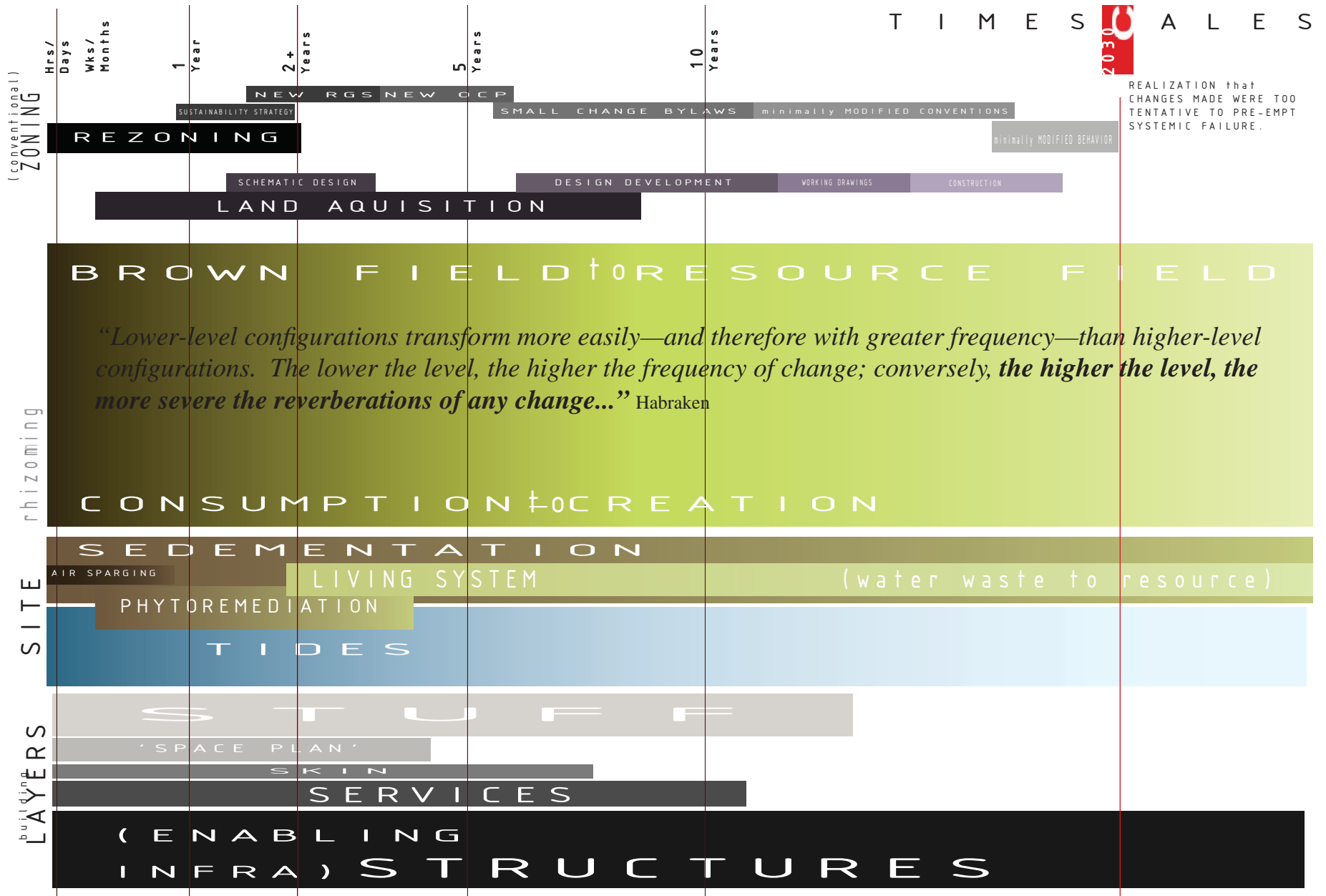
fluxcore *n.* : a solid material which evaporates to facilitate the process of welding.

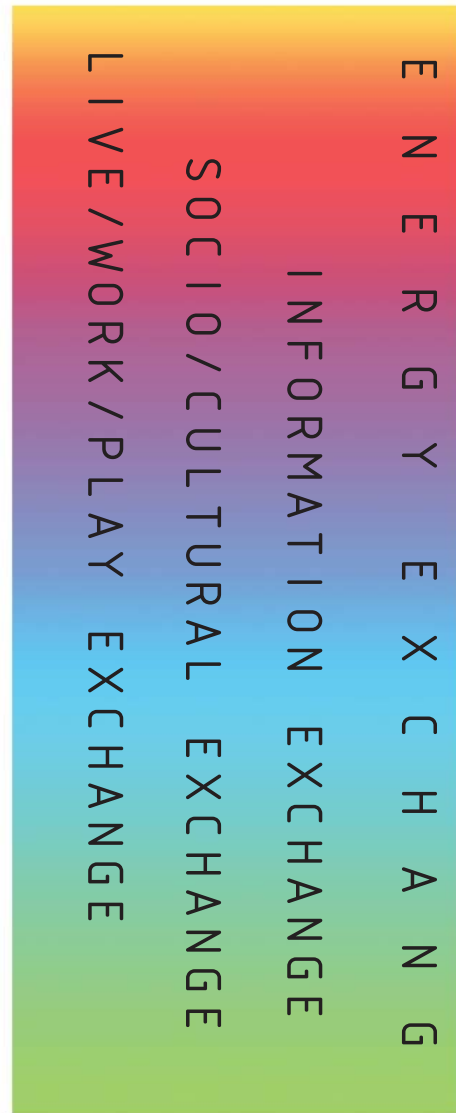
coreflux *n.* : an urban fabric whose boundaries evaporate (flux) to facilitate material and socio-cultural exchange.
v.t. : to fuse together forms, spaces, and experiences through continually changing use.

Our current regulatory (and design) systems are based on maintaining and empowering finite boundaries. CoreFlux is flow based, inherently unbounded, unprescribed and indeterminate. To enable CoreFlux, a radical shift is required.

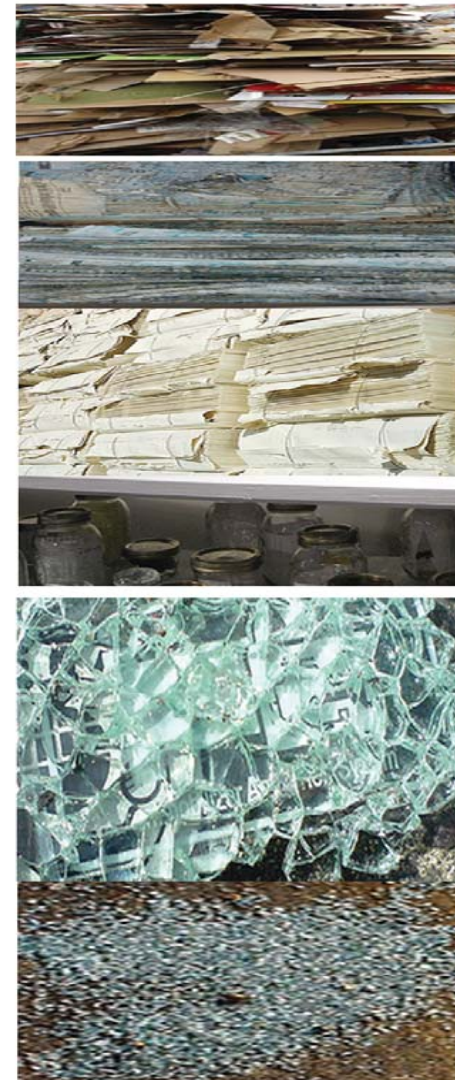
This project attempts to design enabling (infra)structures--redesigns across all scales to enable this shift.

"TIME IS THE ESSENCE OF THE REAL DESIGN PROBLEM."





MATERIAL EXCHANGE



MATERIAL HIERARCHIES

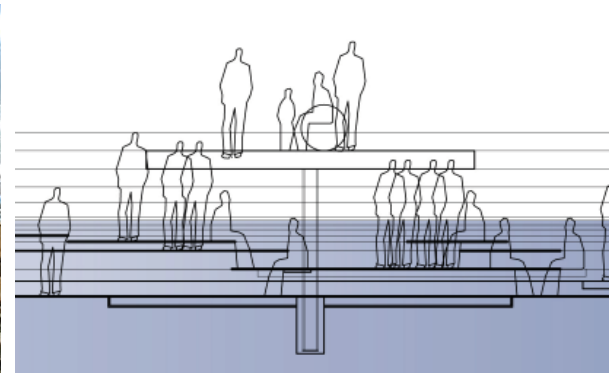
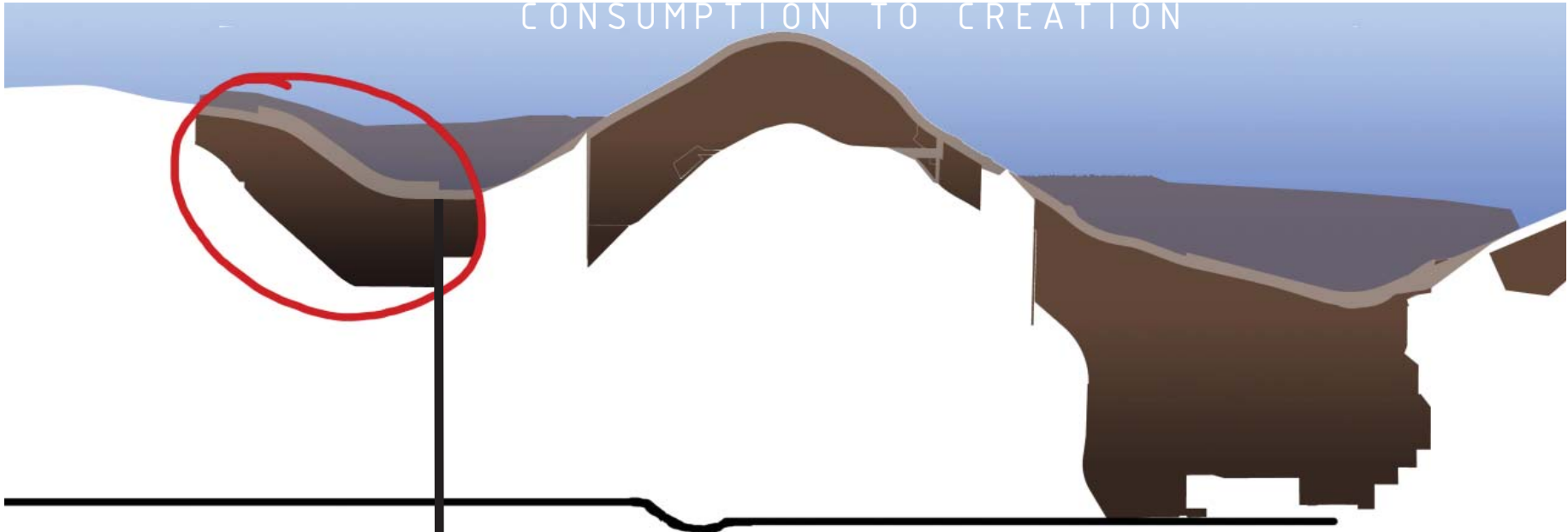
FROM DISTRICTS TO FLOW EXCHANGES



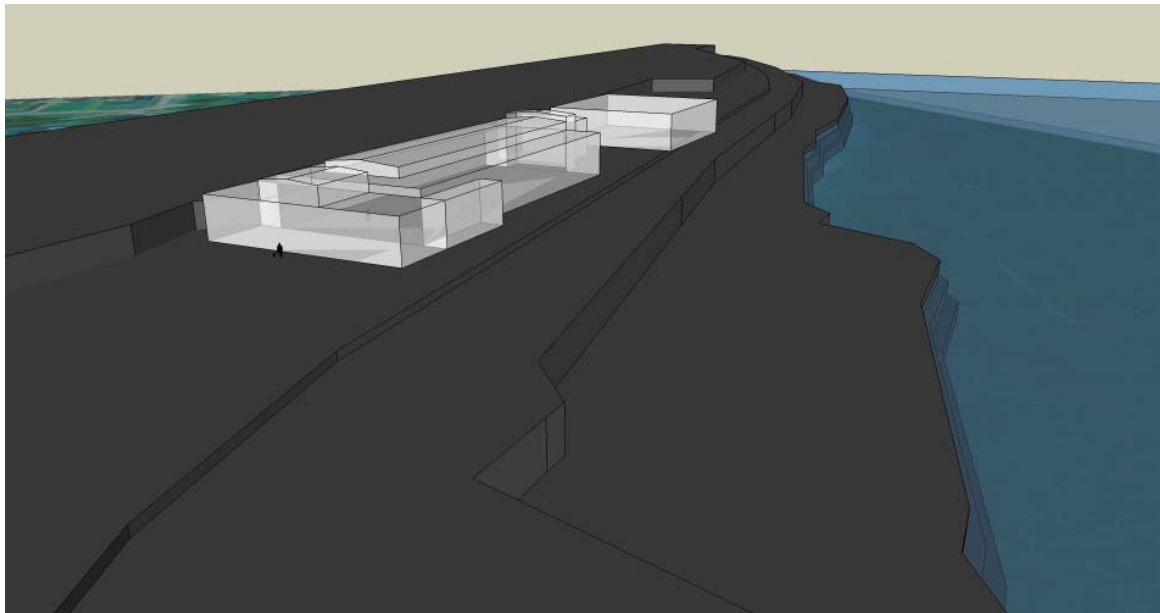
SITE & PROGRAM: WASTE TO RESOURCE

CoreFlux

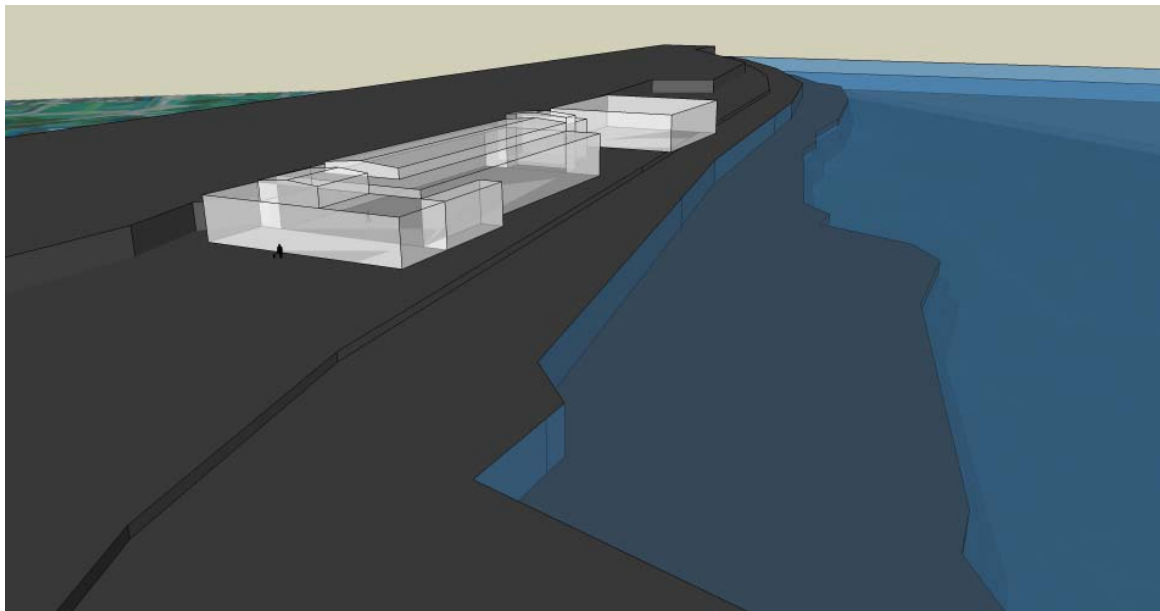
CONSUMPTION TO CREATION



~~BROWN~~FIELD + RESOURCE ~~CENTRE~~ = FIELD of ENABLING RESOURCES



EXISTING BUILDING
NOW



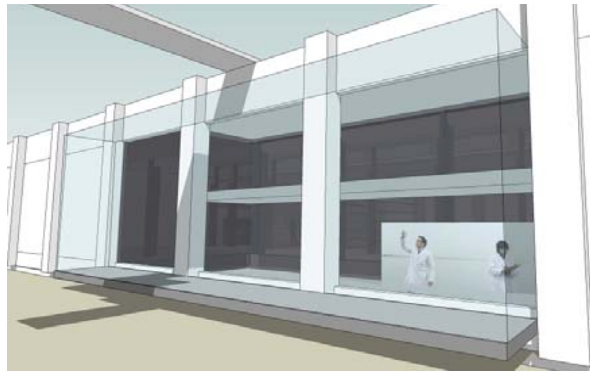
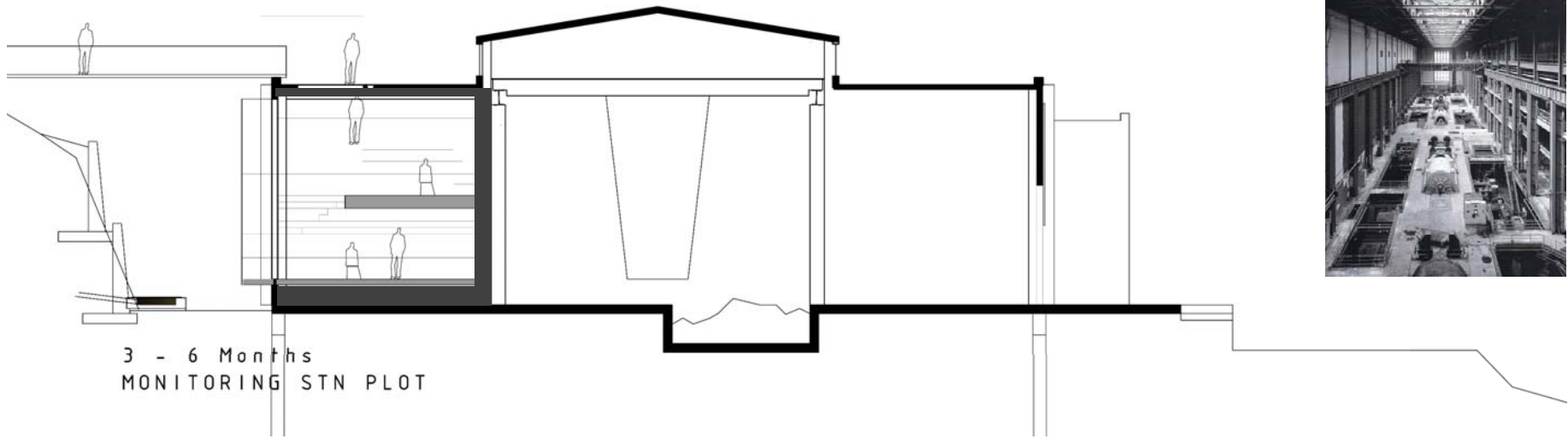
EXISTING BUILDING
5m RISE

SEA LEVEL

PLOTTING (3-6 Months)

CoreFlux

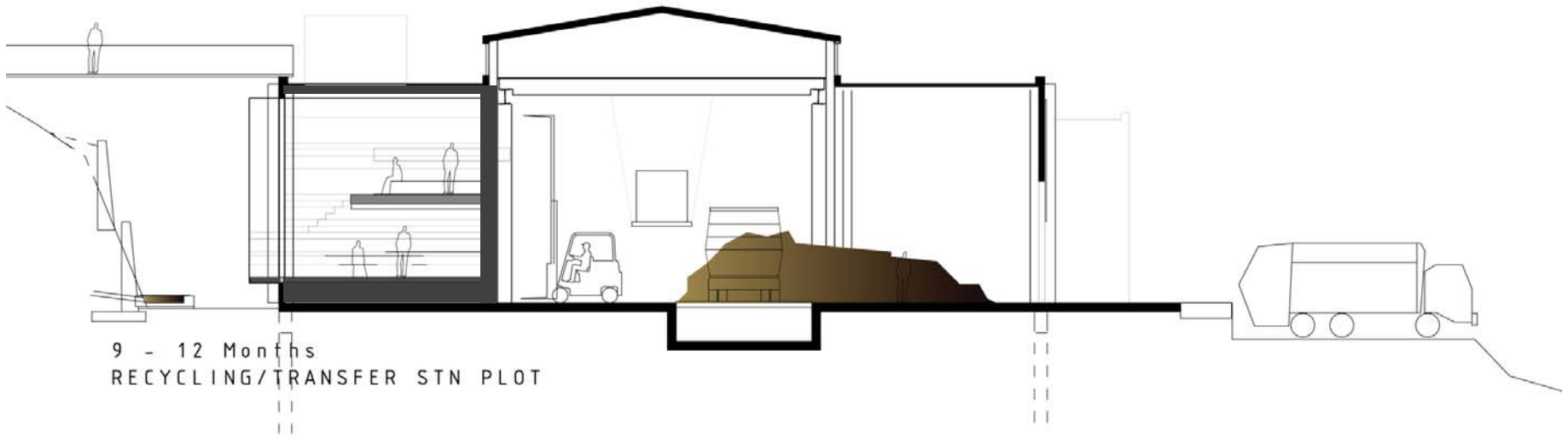
phytoremediation monitoring lab INDUSTRIAL



RESOURCE MONITORING

phytoremediation monitoring lab
recycling/sorting/transfer station

INDUSTRIAL
GREEN INFRASTRUCTURE



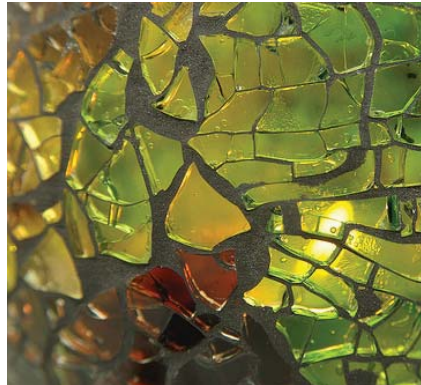
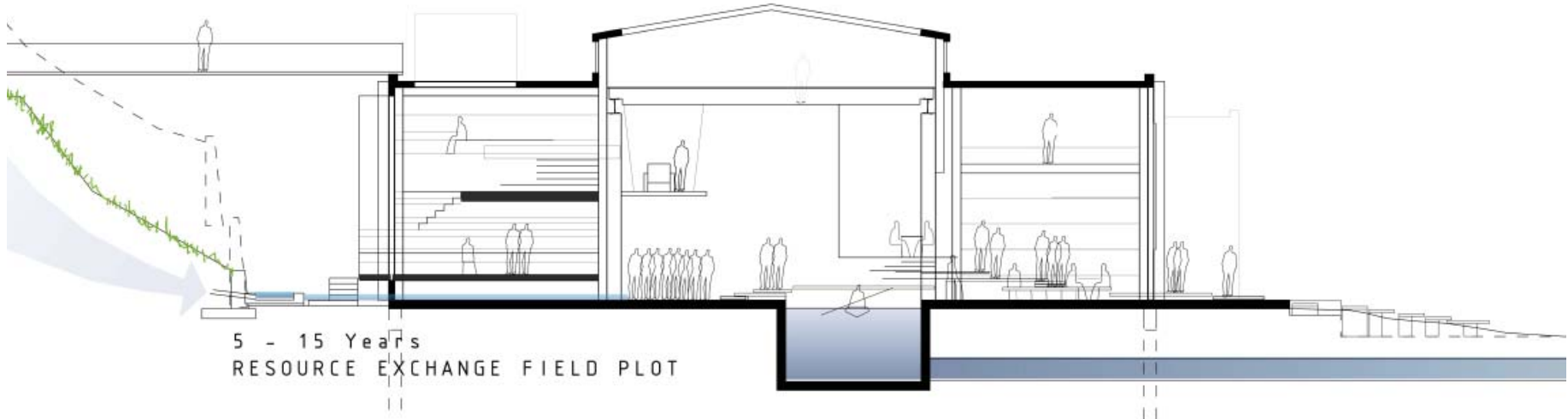
RESOURCE COLLECTION

PLOTTING (5-15 Years)

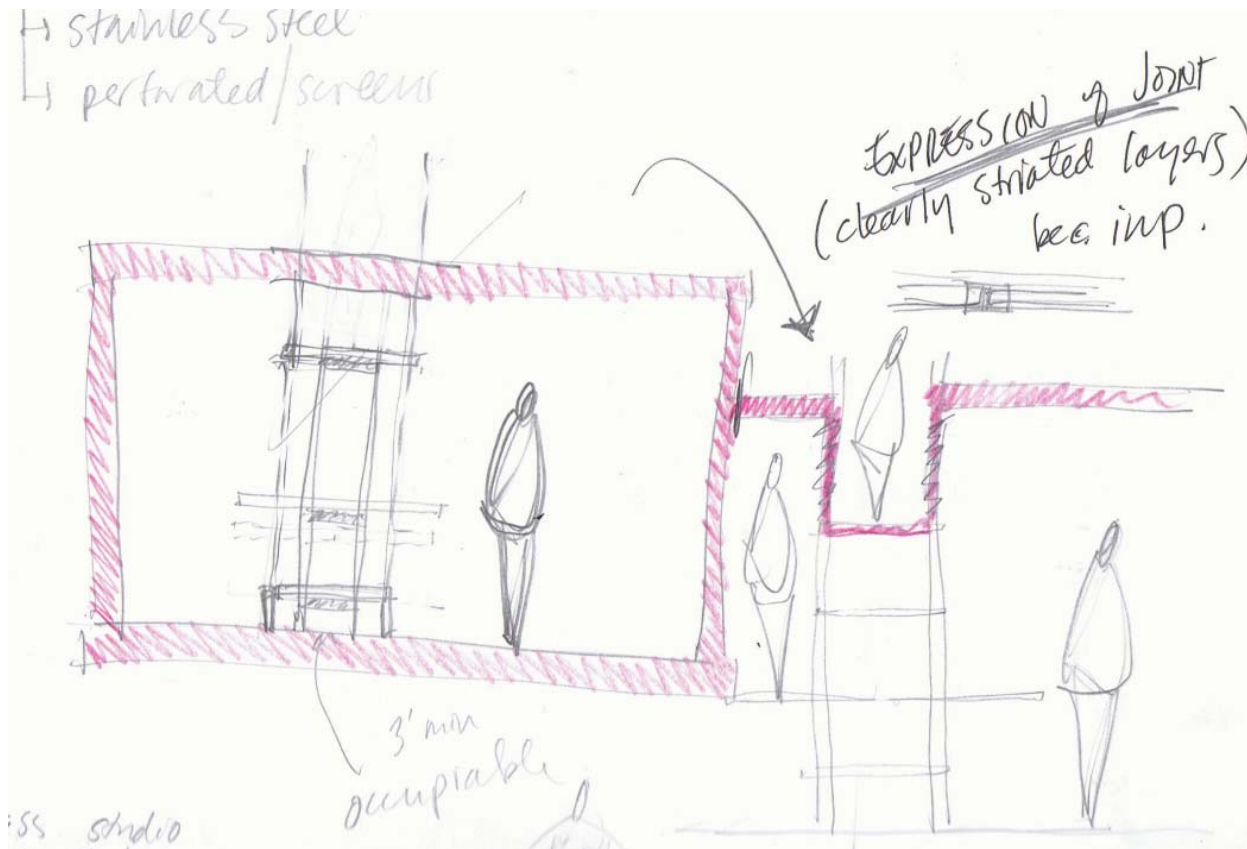
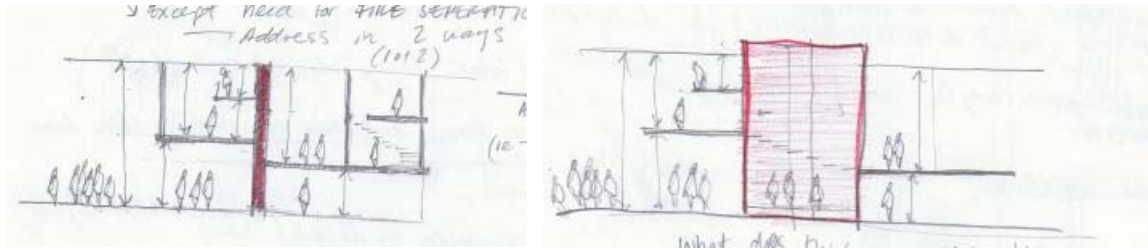
CoreFlux

loft units/ walk outs/2 storeys
water bar/ tea house/ kayak rentals/ art markets
glass blowing studio/furniture studio/paper making studio/book binding
book exchange/community library/collaborative resource centre
decoupled water & waste treatment (via terraced wetlands)

RESIDENTIAL
COMMERCIAL
INDUSTRIAL
PUBLIC/INSTITUTIONAL
GREEN INFRASTRUCTURE



RESOURCE CREATION



INHABITABLE FIRE WALLS